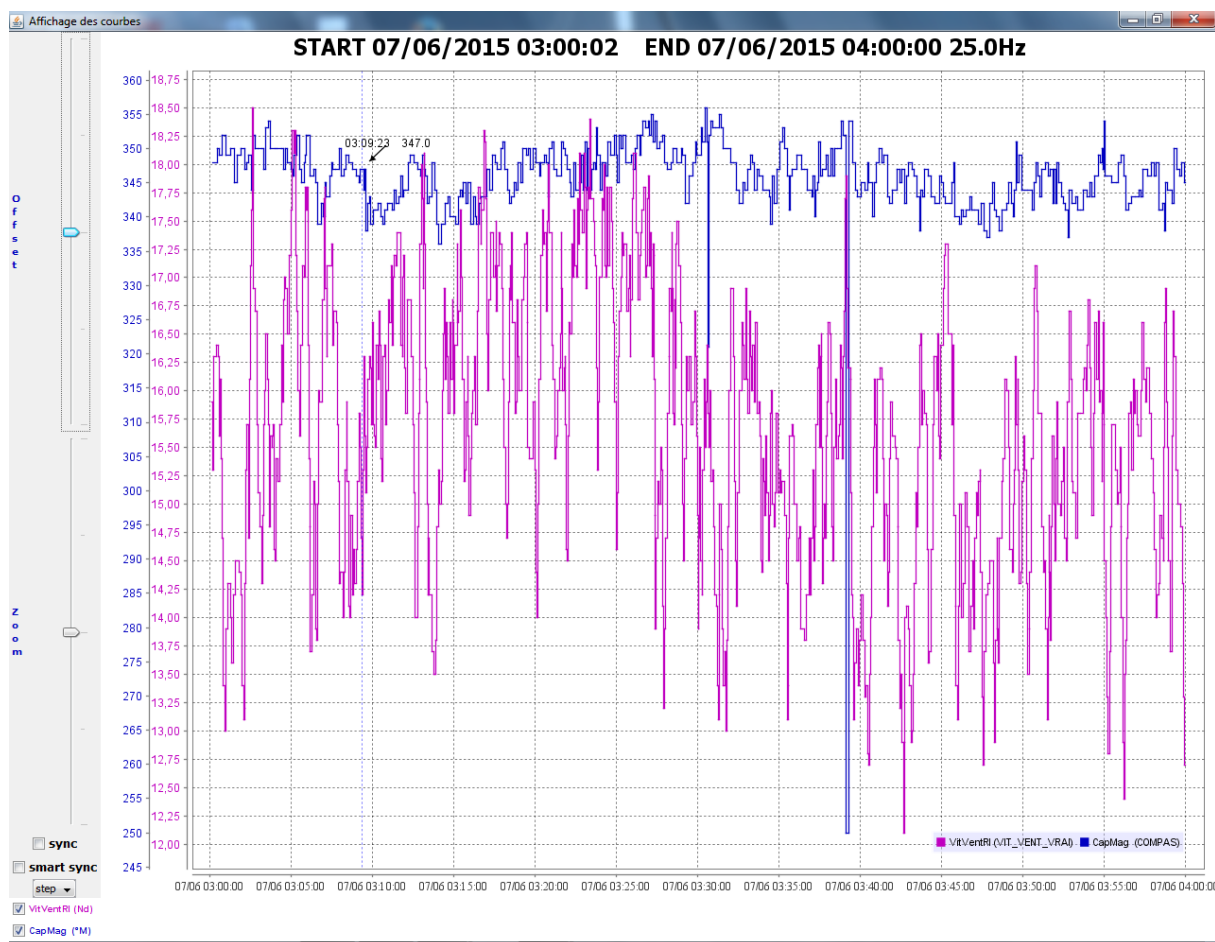


LogAnalyser



USER MANUAL & INSTALLATION SHEET



1) Introduction :	3
2) Installation	3
3) operation	3
3.1 General view	3
3.2 Graph display	4
3.3 Export in a file	5

1) INTRODUCTION :

LogAnalyser is a software program that analyses the files containing data logged from the Topline bus or saved on the USB key featured on the processor.

It can read files using the ctz and nkz extensions.

2) INSTALLATION

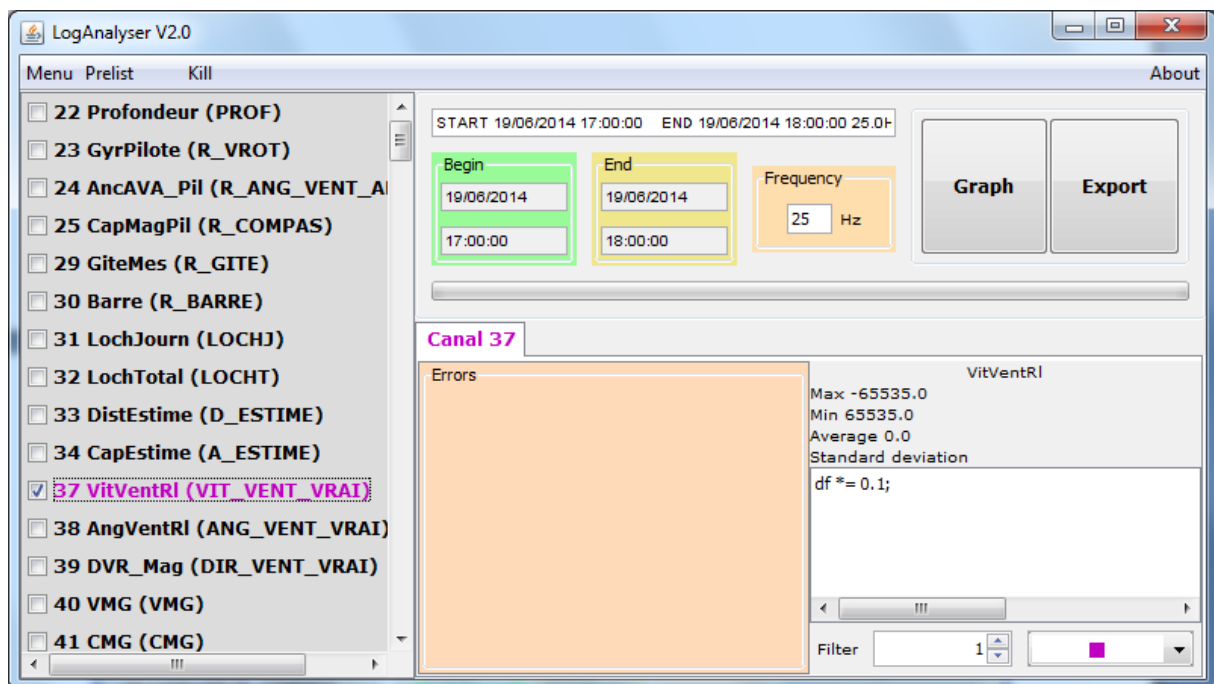
Install the “LogAnalyser” application folder in “Program Files/nke” (create the nke folder if needed).

Create a shortcut on the desktop for “run_LogAnalyser.bat”.

3) OPERATION

3.1 General view

Launch “LogAnalyser” with a double-click on the shortcut located on the desktop.



The ‘Menu’ button, located on the top left allows the selection of the file (Open) to analyse and exit the application. You can select several files such as the menu display and the files recently opened.

You can select one or several channels in the panel by ticking boxes. Right-click on the channel panel to open a pop-up menu which gives the choice to:

- Hide channels not present in the log.
- Reverse channel selection.
- Select all channels.
- Unselect all channels.
- Save the channel selection for further use.
- Open the folder where the selected files are located.

The “Prelist” menu contains all the logs.

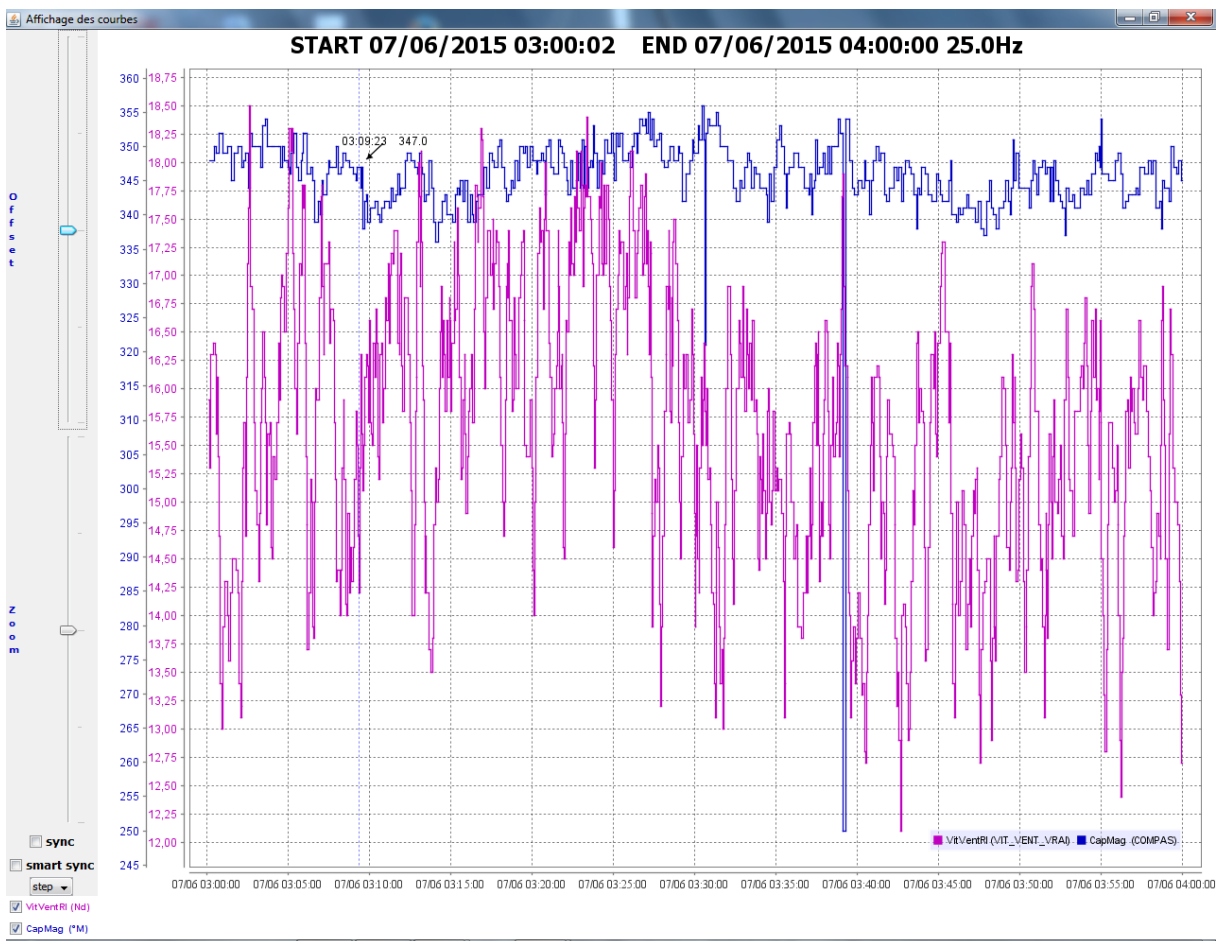
It is possible to delete them one by one with a right-click on the file to delete.

The “kill” menu stops the running task.

When you select a channel, it is possible to edit the data filter and smooth the curve. This filtering can be done after data sampling. The colour of the channel can be edited as well. The selected colour will be used for the graph display.

3.2 Graph display

LogAnalyser is able to draw a graph featuring each channel working on the bus. You can access this function with the “Graph” button.



The “zoom” and “offset” cursers control the range and zoom of the curves individually. You can select the curve to be controlled in two different ways:

- With a double-click on the curve itself. The “zoom” and “offset” legend appear in the same colour as the curve.
- With a right-click on one of the control cursor and the selection of the curve in a comboBox.

The cursers can be controlled with the mouse left click, or the mouse roller.

The sync option synchronises all the curves with a single scale and the cursers will then control all the curves at the same time. The P (point) option displays the curve in a point by point mode. The L&P option links 2 successive points with a line.

“checkBox”, at the bottom, controls whether the curves are displayed or not. Deleting a curve deletes the related scale. Just tick the box again to display the curve again. Right-click on the graph opens the following options: print, save as image...

You can zoom on the graph by selecting an area with the left click. A single click moving the mouse from right to left on the graph gets out of the zoom mode.

A double-click on a point displays the date, time and value of that point.

3.3 Export in a file.

LogAnalyser can export data from selected channels to 2 different types of file:

- CSV format:

The files are created with the Excel limitations. For example, an export containing data for one hour at 25Hz means three files for 20 minutes each.

- KML format:

Compatible with Google earth. The points are time-stamped.

Once export is done, the files are available in the “Rapport” folder. You can access them with a right-click on the channels panel, and by selecting “Open working directory”